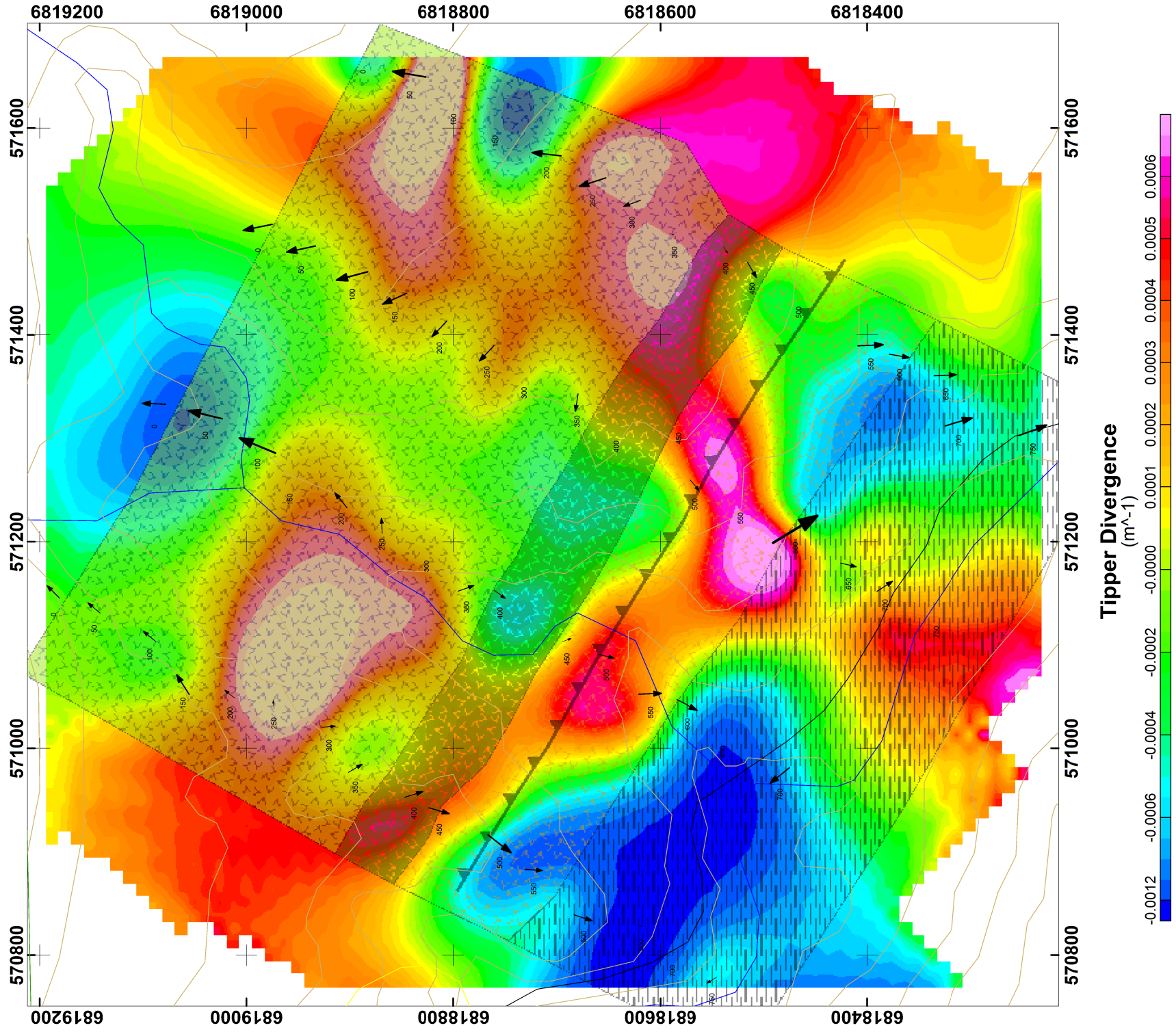
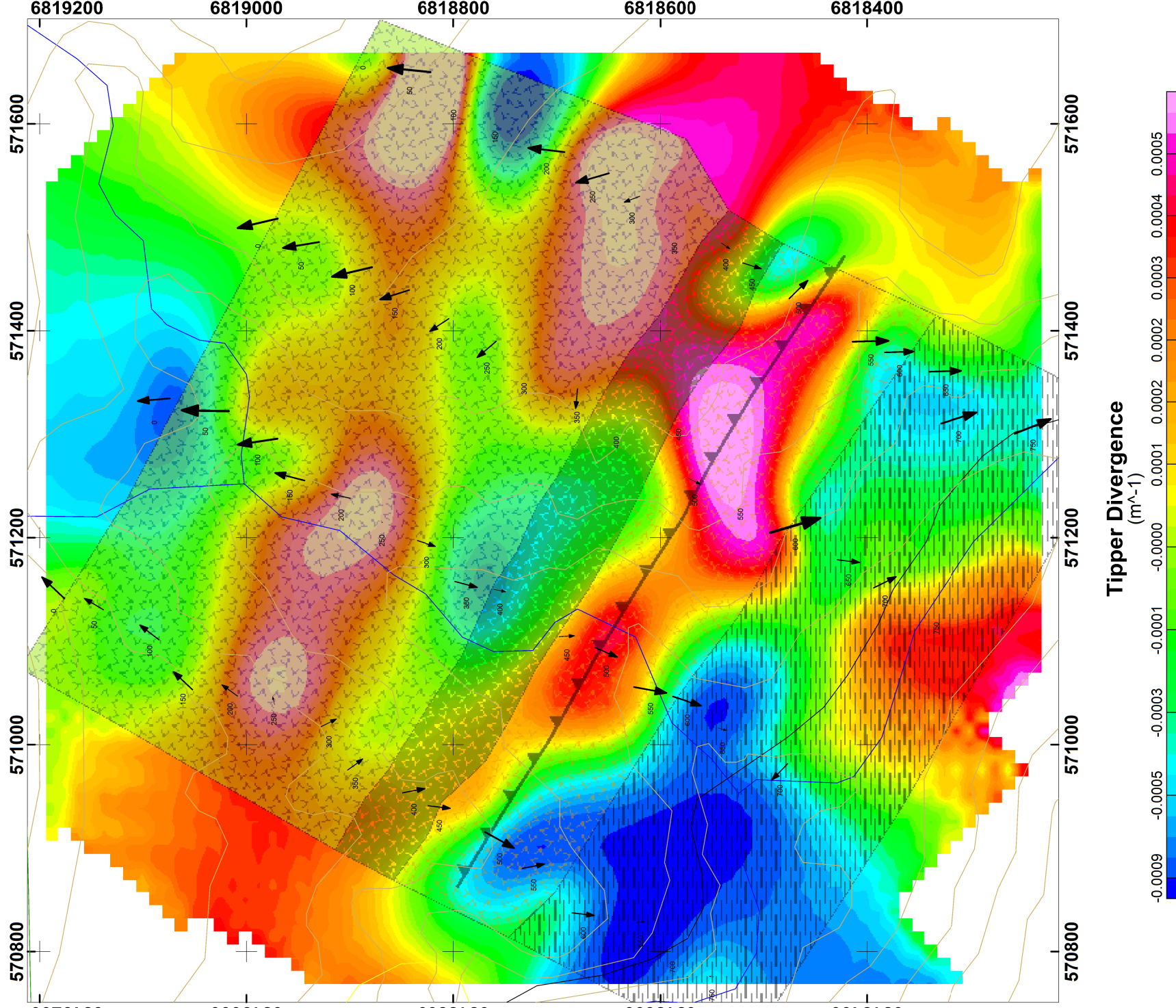


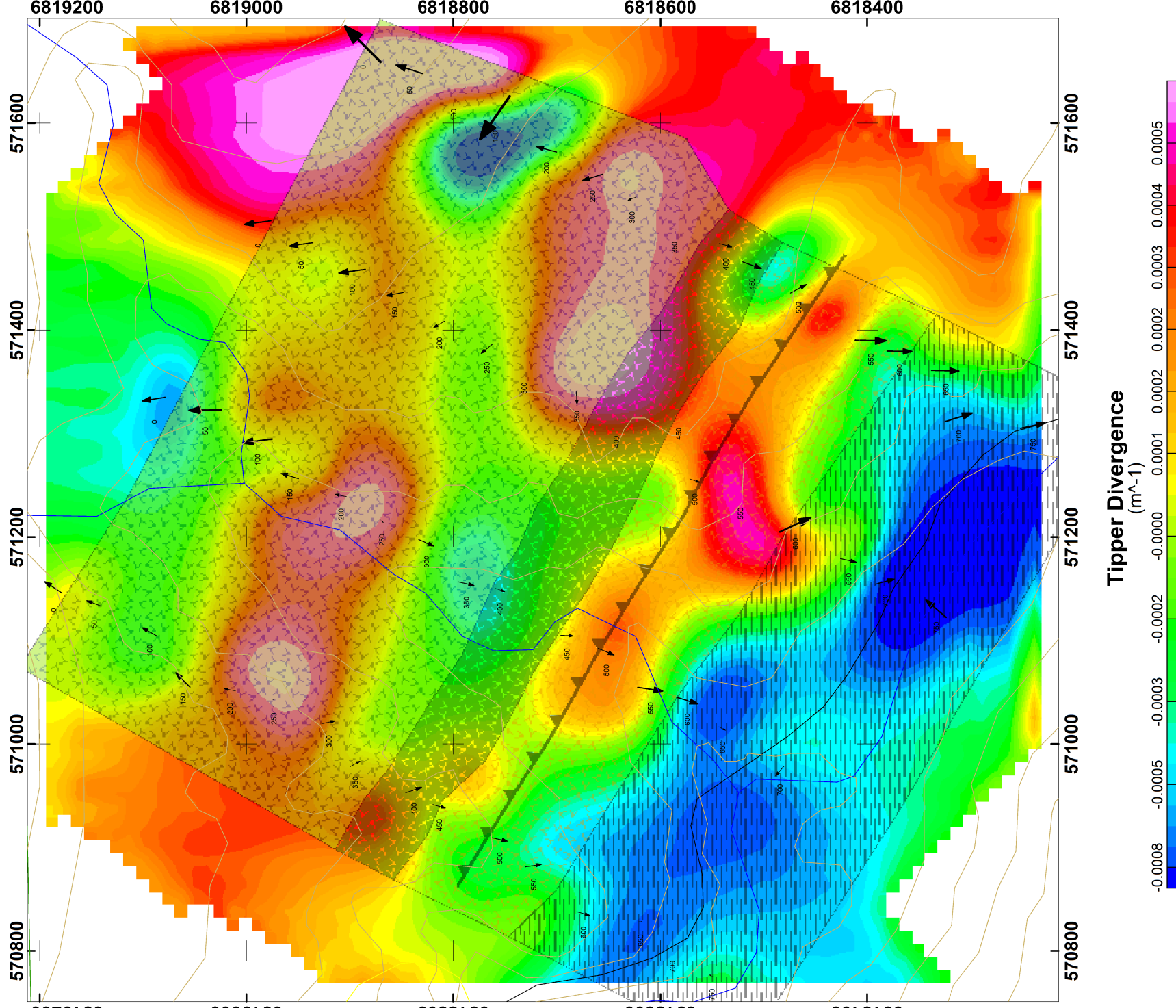
720 Hz



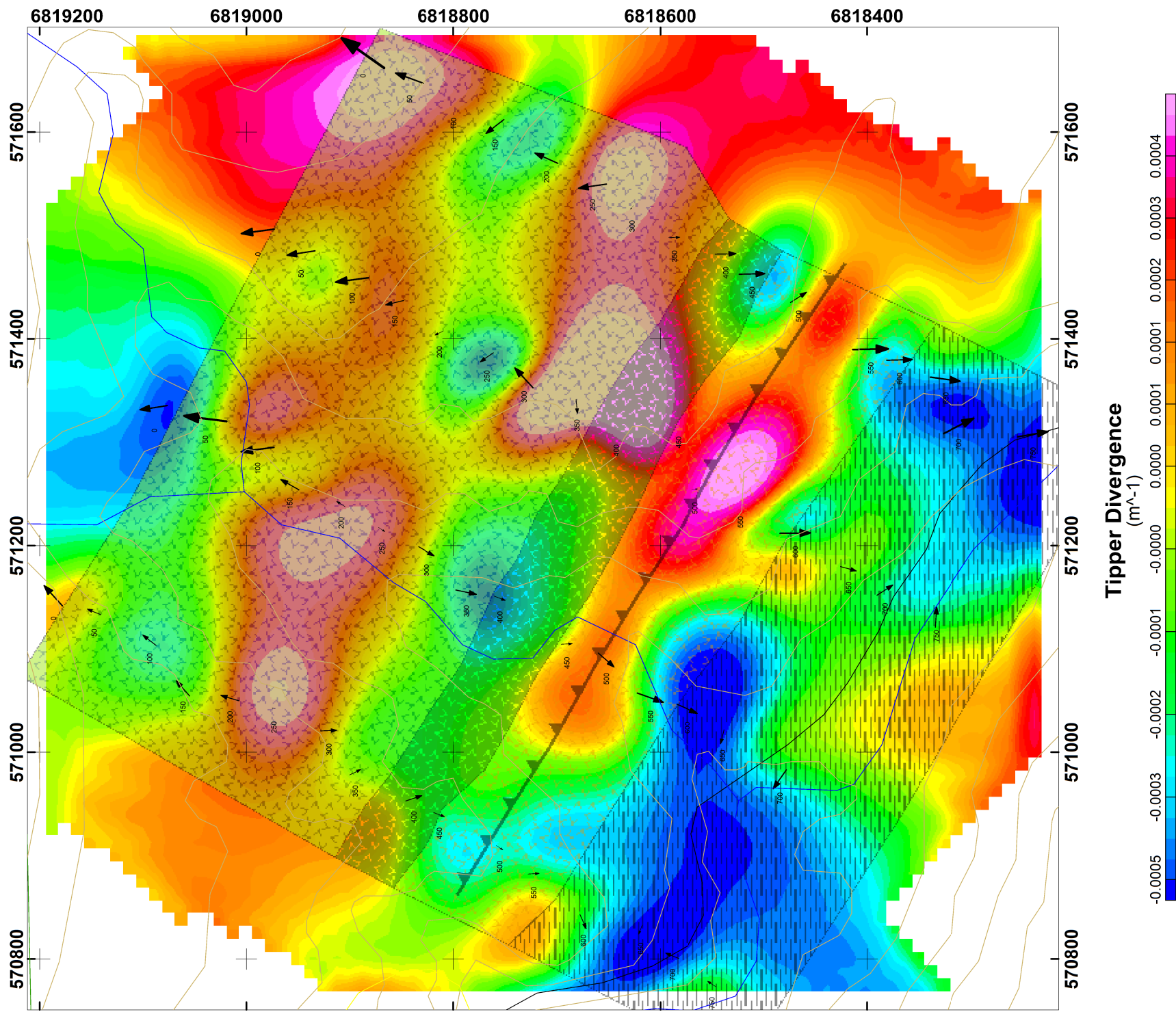
360 Hz



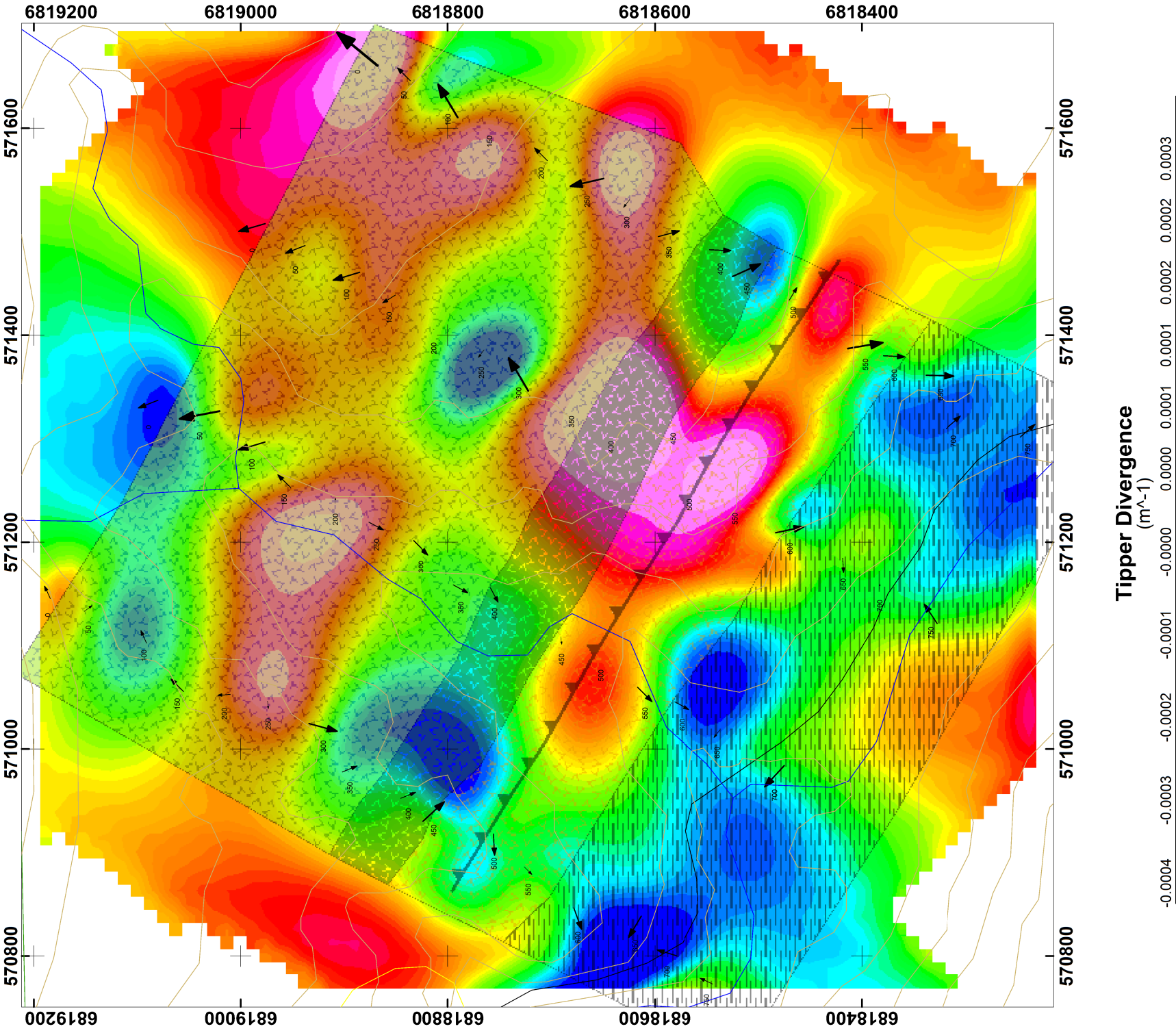
180 Hz



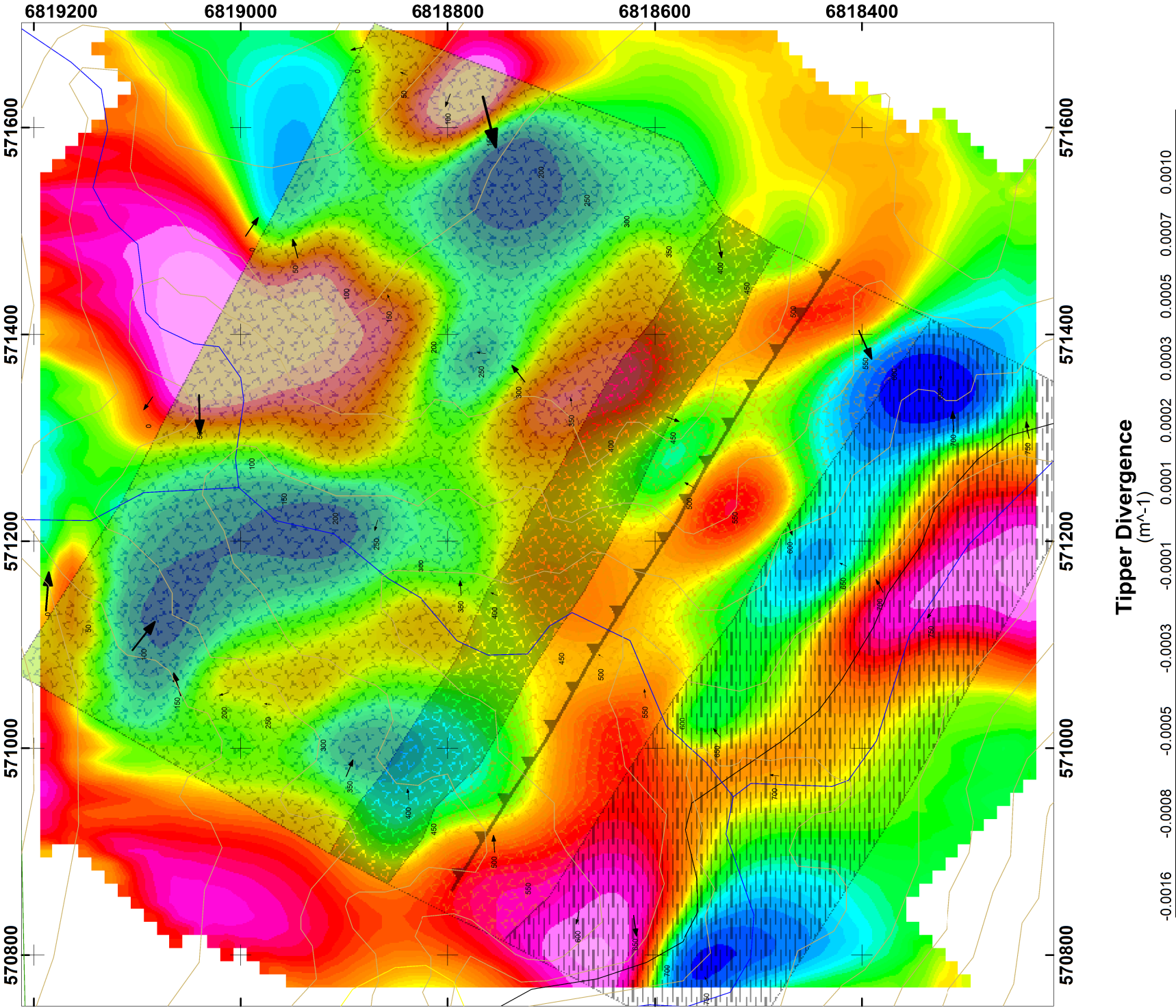
90 Hz



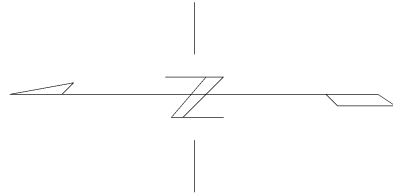
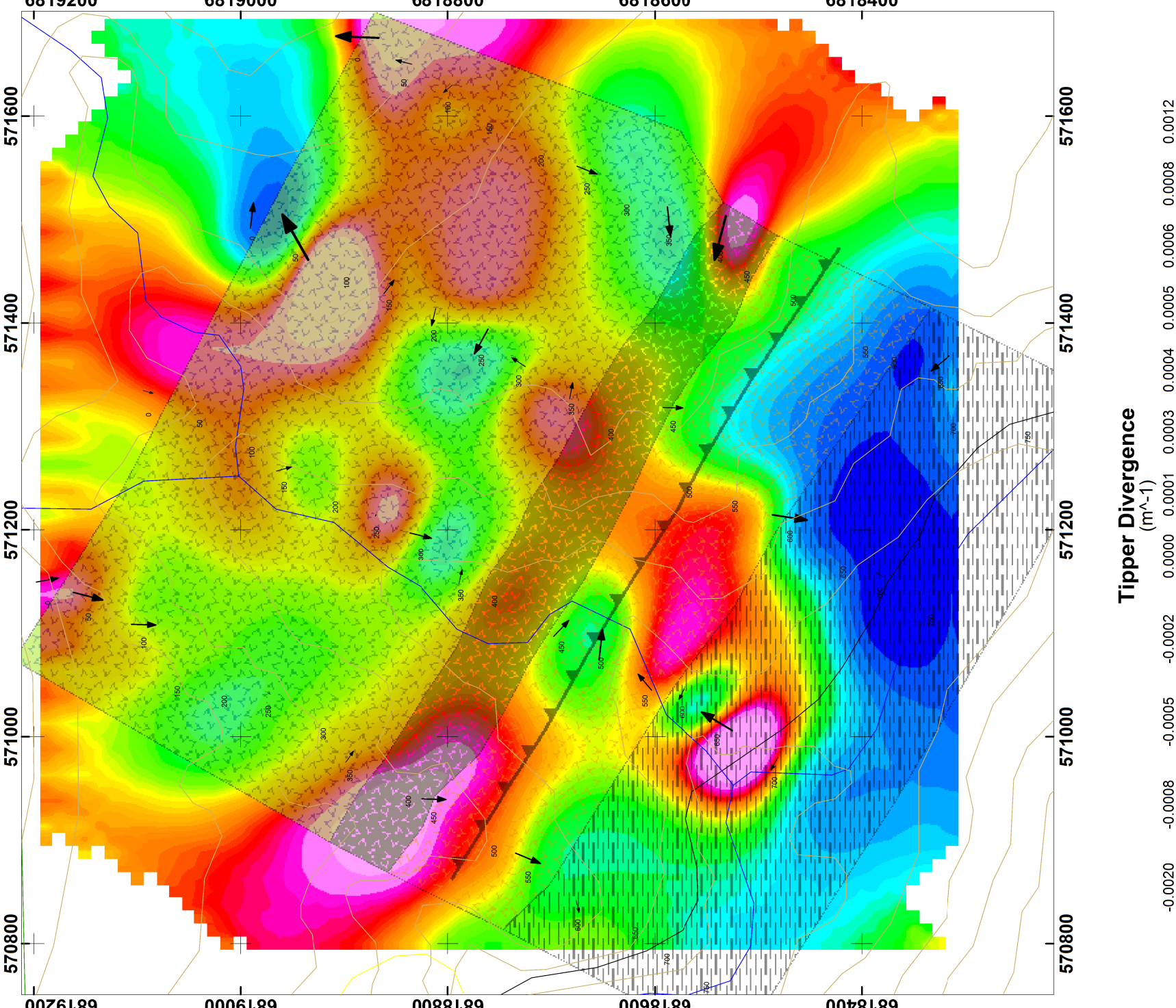
45 Hz



22 Hz



11 Hz



LEGEND

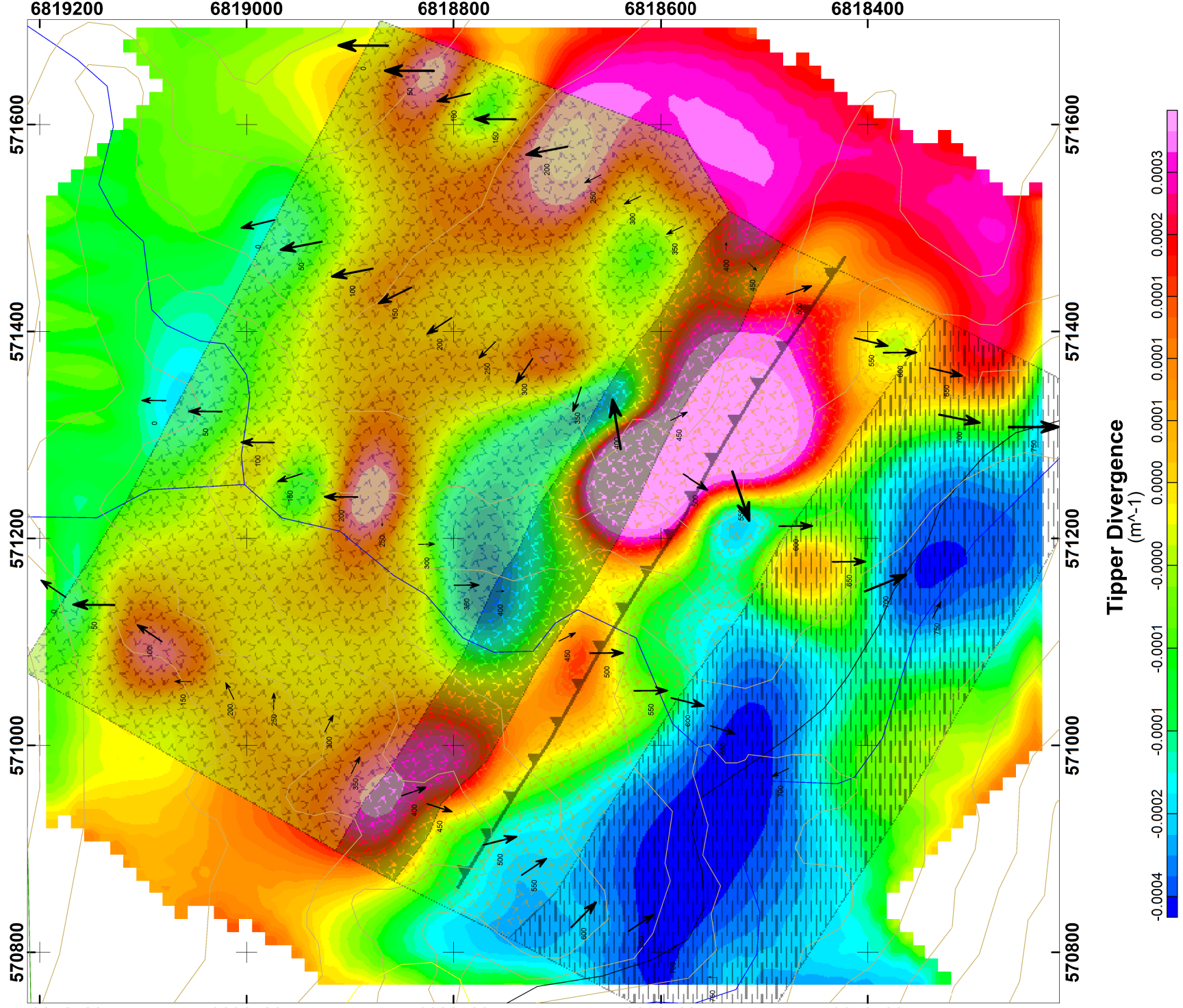
EXTREMELY LOW FREQUENCY SURVEY

STATION TIPPER VECTOR
200
DATA FILE: WELLGREEN_ELF_PJ_QC.grib
OPERATORS: PJ & CP
TOTAL STATIONS SURVEYED: 83

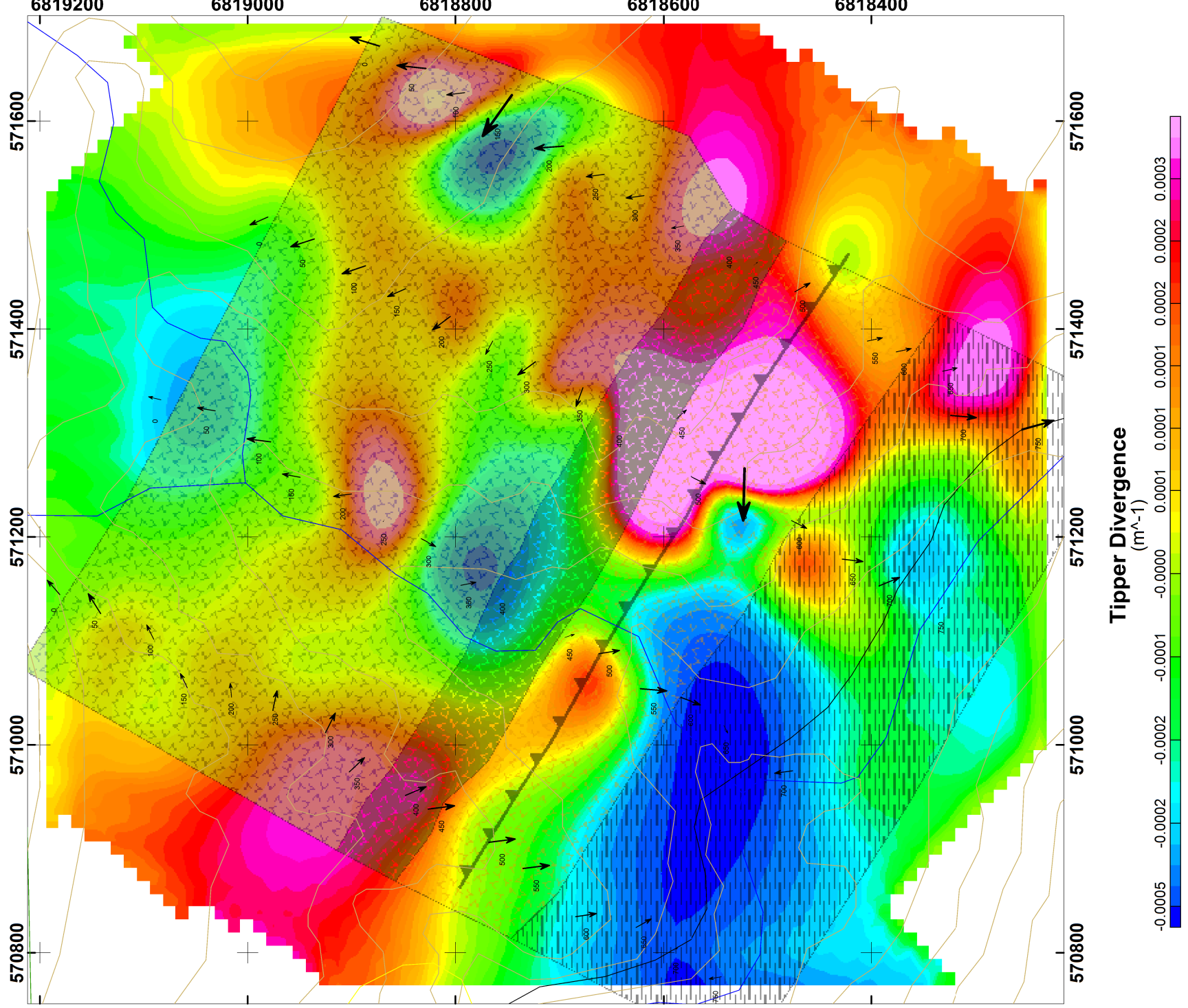
Scale 1:5000
50 0 50 100 150
Meters
NAD83 / UTM zone 7N

MIDNIGHT MINING SERVICES
DONJEK-ARCH PROJECT - TECK GRID ELF COMPIATION INPHASE TIPPER VECTORS & DIVERGENCE PLOTS
WHITEHORSE MINING DISTRICT, YUKON, CANADA NTS: 115 G 05 DATE SURVEYED: AUGUST 2013 DATE / DRAWN BY: AUG 28, 2013 / PJ
AURORA GEOSCIENCES LTD

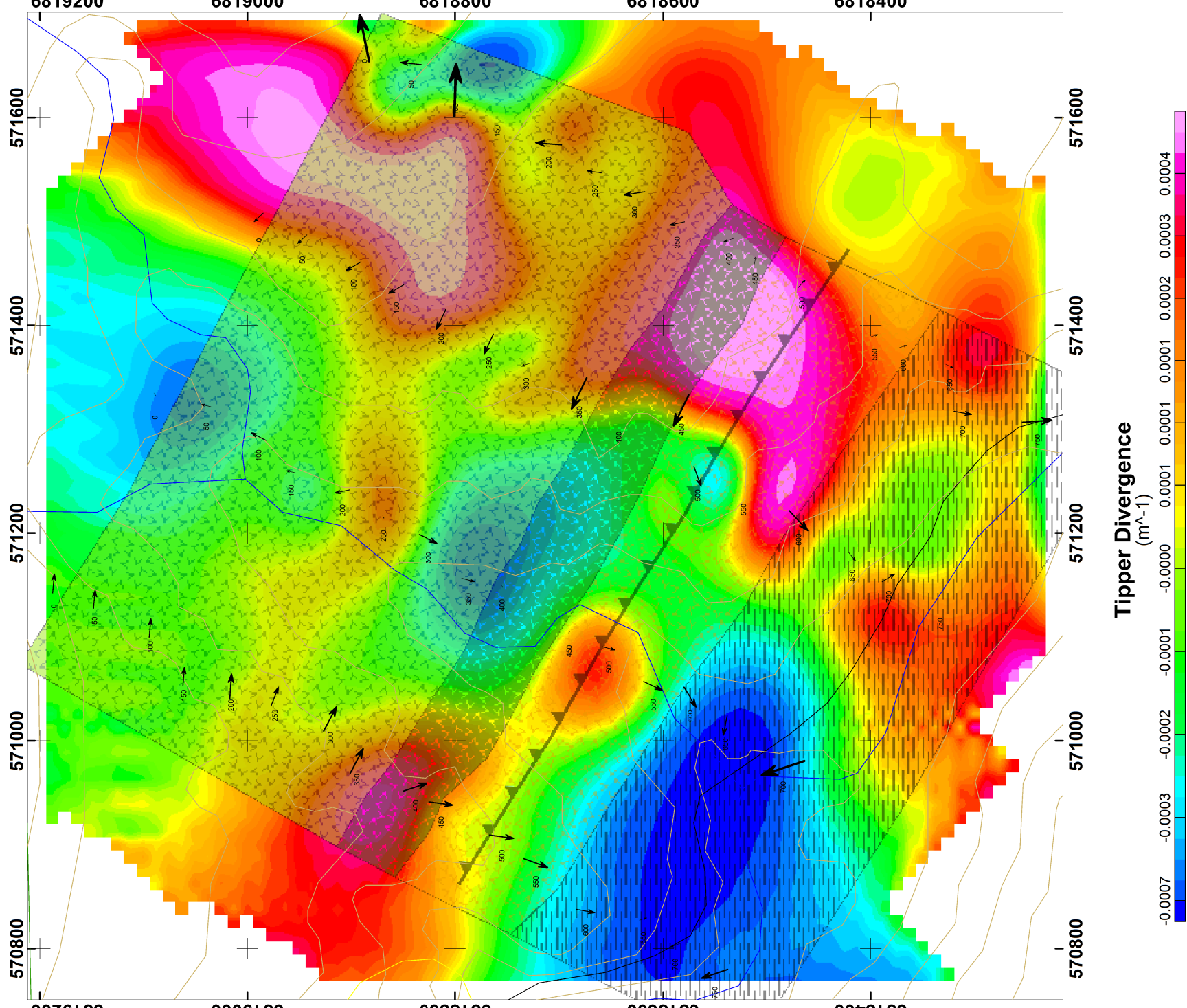
90 Hz



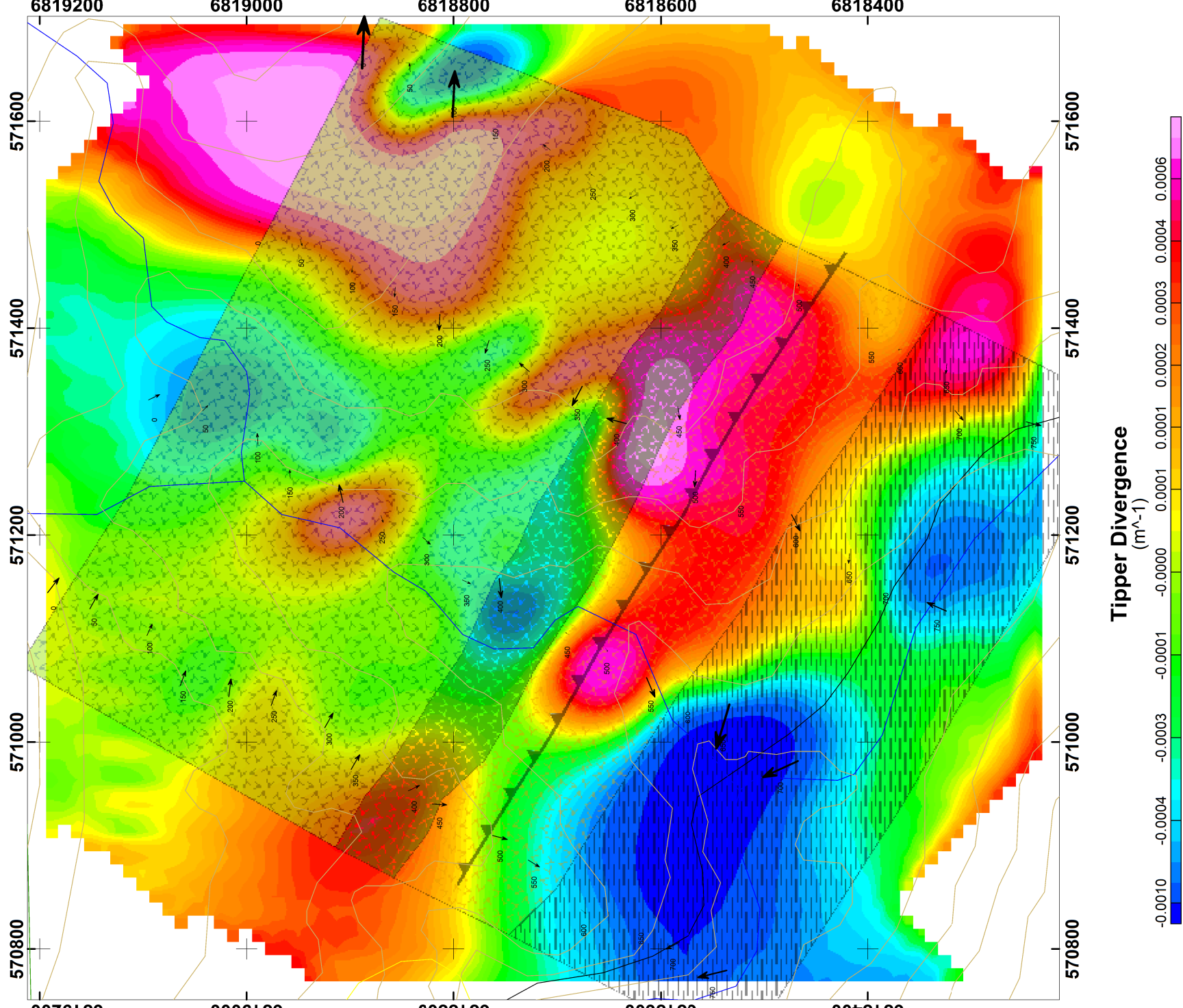
180 Hz



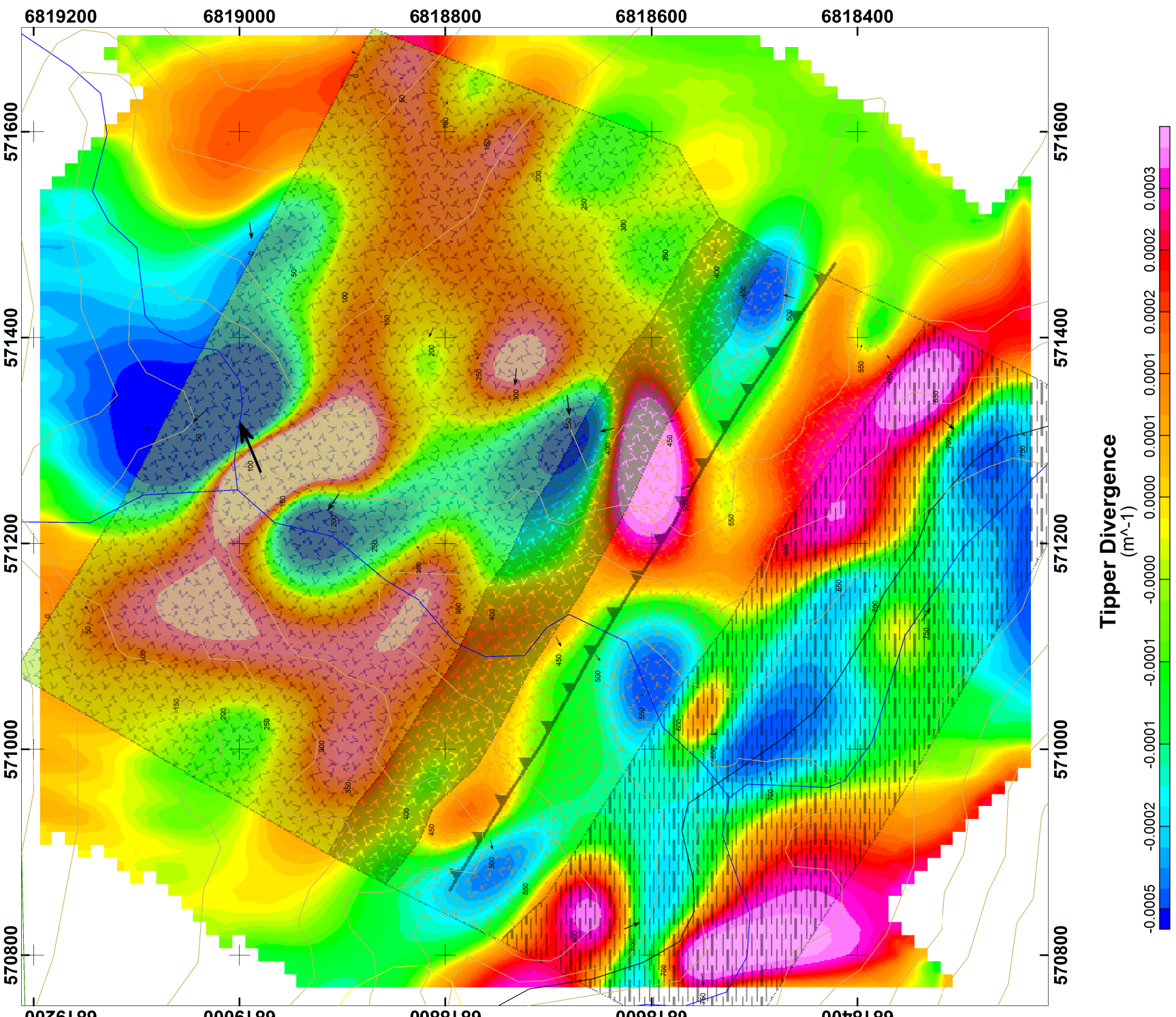
360 Hz



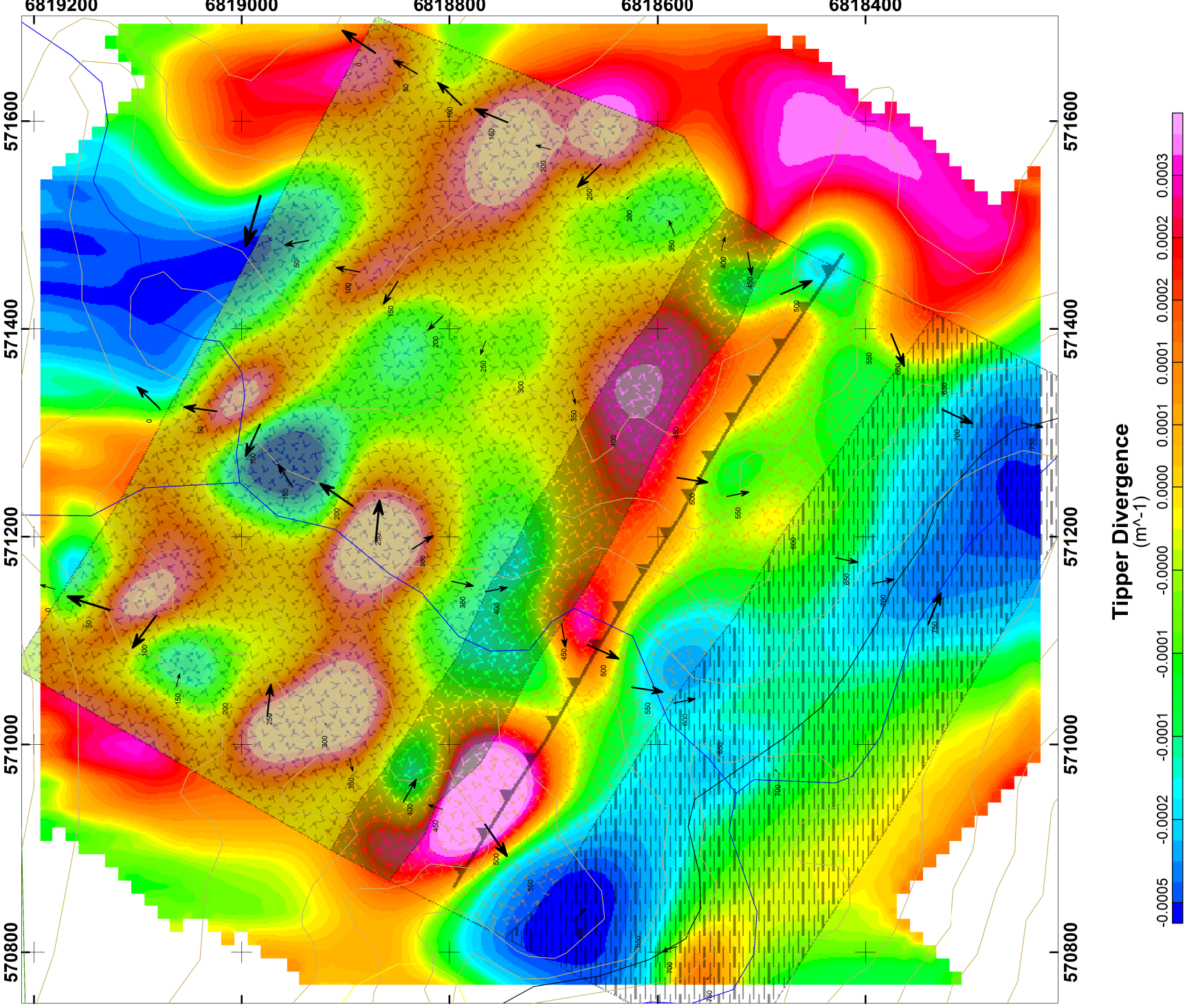
720 Hz



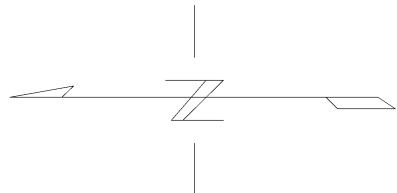
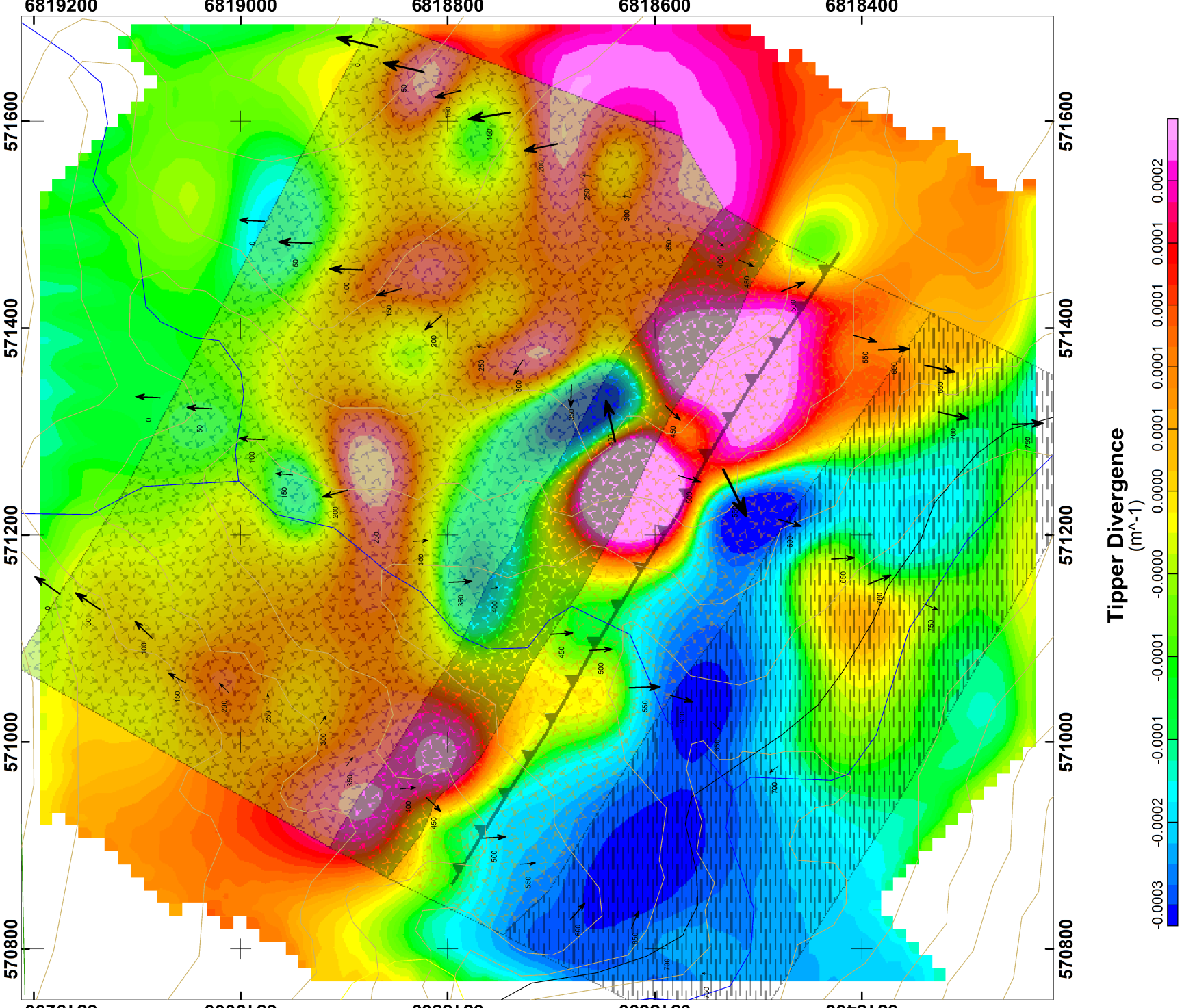
11 Hz



22 Hz



45 Hz



LEGEND

EXTREMELY LOW FREQUENCY SURVEY

STATION
TIPPER VECTOR
200
DATA FILE : WELLGREEN_ELF_PJ_OC.gdb
OPERATORS : P.J & CP
TOTAL STATIONS SURVEYED : 83

Scale 1:5000
50 0 50 100 150
METRES
NAD83 / UTM Zone 7N

MIDNIGHT MINING SERVICES
DONJEK-ARCH PROJECT - TECK GRID ELF COMPILATION
QUADRATURE TIPPER VECTORS & DIVERGENCE PLOTS
WHITEHORSE MINING DISTRICT, YUKON, CANADA NTS: 115 G 05 DATE SURVEYED: AUGUST 2013 DATE / DRAWN BY: AUG 28, 2013 / PJ
AURORA GEOSCIENCES LTD